

# Ball Valve

## Design Feature:

- 2 Pc Body Construction
- Investment Cast Components
- Full Port
- Blow Out Proof Stem
- Screwed Female Ends

## Conformity to Standards & Codes :

Design & Face to Face Dimensions :  
BS 5351 / ISO 17292

Valve Testing : API 598

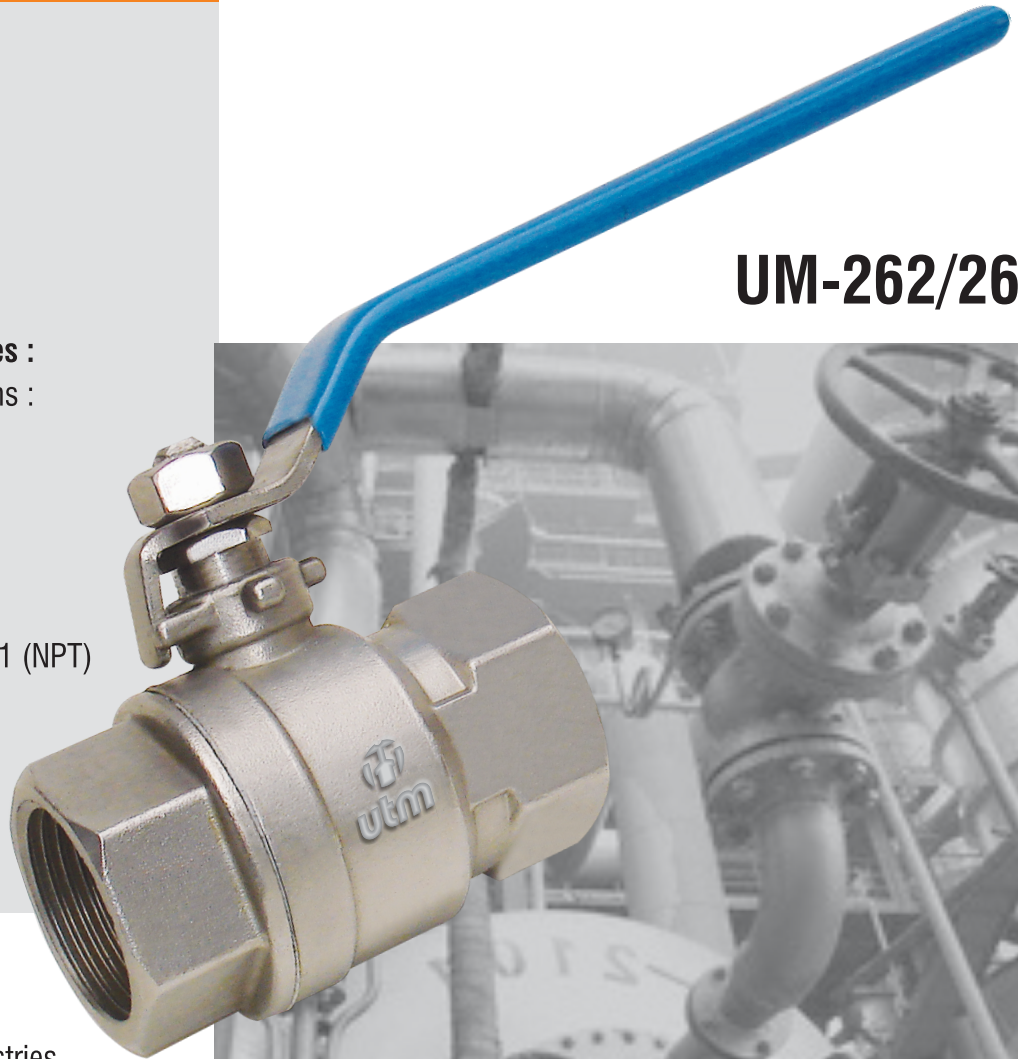
Threaded Ends Conformity :  
BS 21 BSP / BSPT, ASME B1.20.1 (NPT)  
DN 259/2999, ISO 228

Size Range :  
6mm (1/4") to 100mm (4")

## Applications:

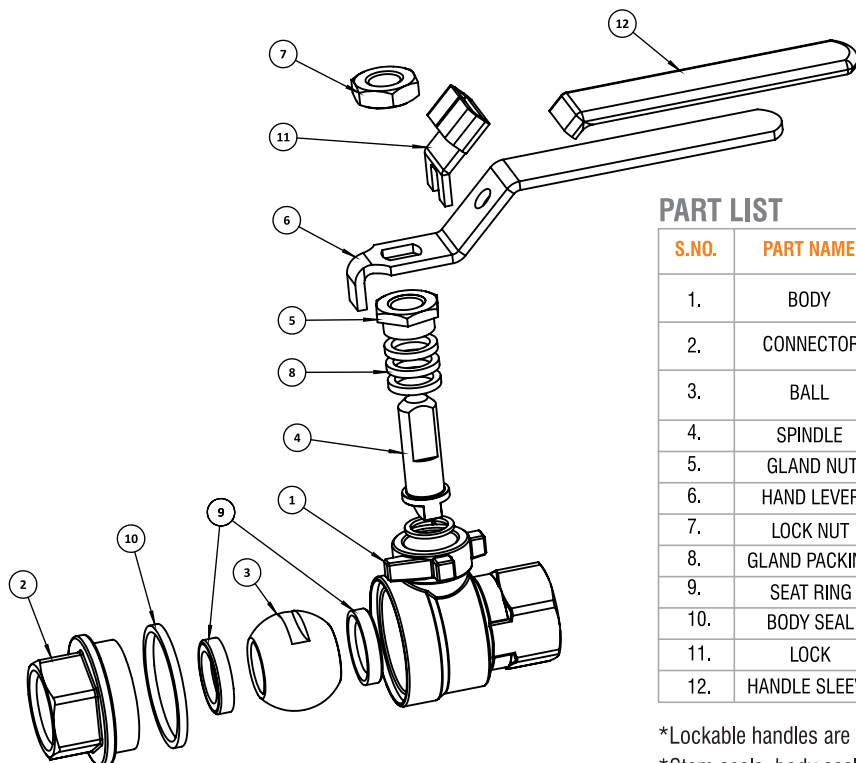
- Food and Pharmaceutical Industries
- Compressed Air / Gas Installations
- Oil Refineries
- Chemical & Solvent Industries
- Petrochemical Industries
- Process Industries

## UM-262/263



DOC. NO. : VAV-C-1001;REV.02;REV. DATE: 18-06-2015





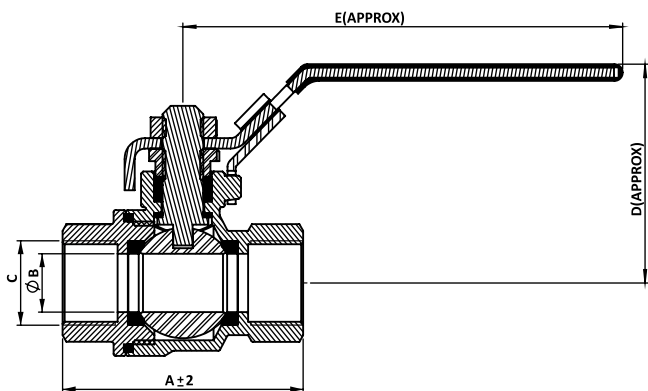
### PART LIST

| S.NO. | PART NAME     | MATERIAL                         | SPECIFICATIONS                                   | QTY. |
|-------|---------------|----------------------------------|--|------|
| 1.    | BODY          | STAINLESS STEEL/<br>CARBON STEEL | ASTM A351 GR.CF8/CF8M/<br>ASTM A216 GR. WCB      | 1    |
| 2.    | CONNECTOR     | STAINLESS STEEL/<br>CARBON STEEL | ASTM A351 GR.CF8/CF8M/<br>ASTM A216 GR. WCB      | 1    |
| 3.    | BALL          | STAINLESS STEEL                  | ASTM A351 GR. CF8/CF8M/<br>ASTM A276 GR. 304/316 | 1    |
| 4.    | SPINDLE       | STAINLESS STEEL                  | ASTM A276 GR. 304/316                            | 1    |
| 5.    | GLAND NUT     | STAINLESS STEEL                  | AISI 304   | 1    |
| 6.    | HAND LEVER    | STAINLESS STEEL                  | AISI 304/202                                     | 1    |
| 7.    | LOCK NUT      | STAINLESS STEEL                  | AISI 304   | 1    |
| 8.    | GLAND PACKING | PTFE                             | BS 6564  | 3    |
| 9.    | SEAT RING     | PTFE                             | BS 6564  | 2    |
| 10.   | BODY SEAL     | PTFE                             | BS 6564  | 1    |
| 11.   | LOCK          | STAINLESS STEEL                  | AISI 304   | 1    |
| 12.   | HANDLE SLEEVE | PVC                              | BS 6076  | 1    |

\*Lockable handles are available on request.

\*Stem seals, body seals and seat ring, other than PTFE are available on request.

### DIMENSIONS



| SIZE   | A     | B   | C               | D   | E   |
|--------|-------|-----|-----------------|-----|-----|
| 6/10MM | 47    | 9.5 | BSP-1/4" & 3/8" | 44  | 84  |
| 15MM   | 59    | 14  | BSP-1/2"        | 53  | 108 |
| 20MM   | 62    | 19  | BSP-3/4"        | 55  | 108 |
| 25MM   | 75.5  | 24  | BSP-1"          | 59  | 131 |
| 32MM   | 84    | 31  | BSP-1.1/4"      | 76  | 154 |
| 40MM   | 94    | 38  | BSP-1.1/2"      | 81  | 194 |
| 50MM   | 110.5 | 50  | BSP-2"          | 90  | 194 |
| 65MM   | 129   | 63  | BSP-2.1/2"      | 128 | 296 |
| 80MM   | 153   | 76  | BSP-3"          | 138 | 296 |
| 100MM  | 187   | 100 | BSP-4"          | 172 | 390 |

\*All dimensions are in mm unless and otherwise specified.

\*NPT Thread available on request.

### GUARANTEE

All valves are guaranteed against any manufacturing defects for a period of 12 months from date of supply, provided the valves have not been misused, damaged or installed for services they are not recommended. The company shall be liable to furnish part / parts thereof or full valve as the company may deem fit.

## V.A. VALVES

Regd. Office & Works: Udyog Nagar, Gadaipur, Jalandhar City -144 004

Phone: +91-181-2601540, 2601541 Fax: +91-181-2601741

E-mail : marketing@vk-utam.com, info@vtm-valves.com

Website : [www.vtm-utam.com](http://www.vtm-utam.com), [www.vtm-valves.com](http://www.vtm-valves.com)

Due to continuous development program, design and data in this leaflet are subject to change without prior notice.

### TEST PRESSURE:

|                                |                        |
|--------------------------------|------------------------|
| Hydraulic Body Test            | 62 Kg/Cm <sup>2</sup>  |
| Pneumatic Seat Test            | 4-7 Kg/Cm <sup>2</sup> |
| Hydraulic Seat Test (Optional) | 45 Kg/Cm <sup>2</sup>  |

Authorized Stockist

Our associates:



PIONEERING FLUID CONTROLS