

Dual Plate Check Valve

VA-21
VA-22

Design Features:

- Torsion Spring assisted closure of plates result in Nil Water Hammer and Non Slam closure
- Uniform Stress Distribution due to cylindrical design of body, thus more robust
- Virtually nil rubbing between plate and seat leads to lower seat wear
- Much lower pressure drop due to lower mass of the plates
- Can be installed in horizontal/vertical/inclined positions
- Flat seat design for longer sealing life

Conformity to Standard & Codes:

Design Standard:

API 594 / API 6D

Face to Face Dimension:

API 594/Manufacturer's standard

End Detail:

Wafer to suit

ANSI B16.5 (CL 125/150),

BS10 (Table D/E)

BS4504 PN16

Valve Testing:

API 598

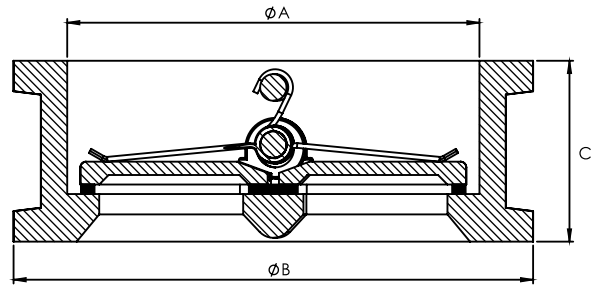
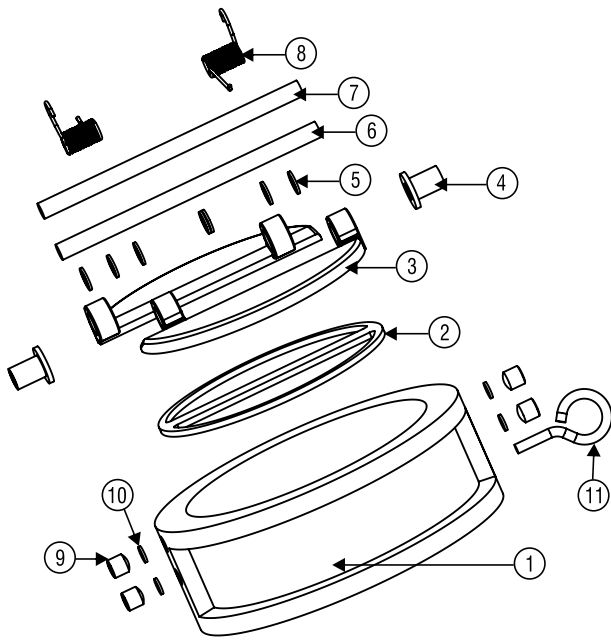
Applications

- Raw/Potable/
Sea Water Supply Systems
- Fire Water Systems
- Chilled/Hot Water Systems
- Oil Lubrication Systems
- Sugar, Paper, Cement, Steel And
Other Industries



DOC. NO. : VAV-C-1010; REV. NO. 03; REV. DATE : 11-04-2017





TEST PRESSURE

TYPE OF TEST	40-300 MM	350-600MM
BODY TEST	24 Kg/Cm ²	15 Kg/Cm ²
HIGH PRESSURE SEAT TEST	17.6 Kg/Cm ²	11 Kg/Cm ²
LOW PRESSURE SEAT TEST	4-7 Kg/Cm ²	4-7 Kg/Cm ²

DIMENSIONS

SIZE (mm)	A	B	C
40	57	83	43
50	62	96	54
65	81	109	54
80	99	130	57
100	116	160	64
125	143	194	70
150	170	214	76
200	219	270	95
250	273	328	108
300	324	378	143
350	360	447	184
400	406	498	191
450	457	546	203
500	508	603	213
600	610	714	222

PART LIST

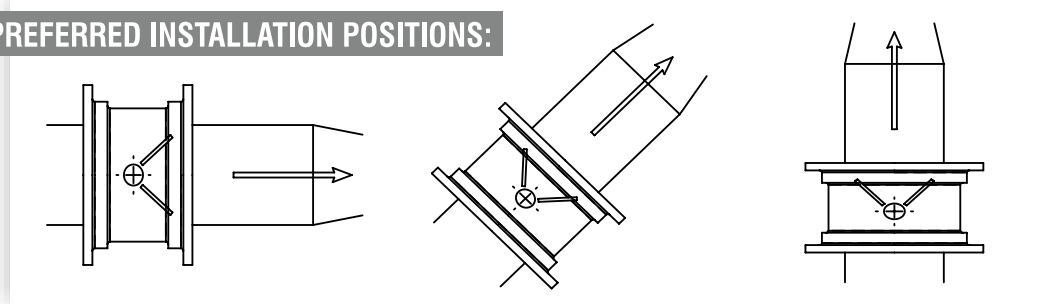
S.NO.	PART NAME	MATERIAL	SPECIFICATIONS
1.	BODY	CAST IRON	IS 210 FG 200 / GG20
2.	SEAT	RUBBER	EPDM/NITRILE
3.	PLATES	DUCTILE IRON/ STAINLESS STEEL	GGG40/ASTM A 351GR.CF8/CF8M
4.	SUPPORTING SLEEVES#	STAINLESS STEEL	13% CR. STAINLESS STEEL
5.	BODY/PLATE/SPRING BEARING	PLASTIC / METAL	NYLON/BRASS
6.	HINGE PIN	STAINLESS STEEL	AISI 304/316
7.	STOP PIN	STAINLESS STEEL	AISI 304/316
8.	TORSION SPRING	STAINLESS STEEL	AISI 304/316
9.	HINGE PIN RETAINERS	STAINLESS STEEL	AISI 202/304
10.	PACKING	RUBBER	EPDM/NITRILE
11.	EYE BOLT**	STEEL	---

#Plate Supporting Sleeves are available from 350mm to 600mm.

**Eyebolts are available from 200mm onwards.

*All dimensions are in mm unless and otherwise specified.

PREFERRED INSTALLATION POSITIONS:



GUARANTEE

All valves are guaranteed against any manufacturing defects for a period of 12 months from date of supply, provided the valves have not been misused, damaged or installed for services they are not recommended. The company shall be liable to furnish part / parts thereof or full valve as the company may deem fit.

V.A. VALVES

ISO 9001-2008 Certified

Regd. Office & Works: Udyog Nagar, Gadaipur, Jalandhar City -144 004

Phone: +91-181-2601540, 2601541 Fax: +91-181-2601741

E-mail : marketing@vk-utam.com, info@vtm-valves.com

Website : www.vtm-utam.com, www.vtm-valves.com

Due to continuous development program, design and data in this leaflet are subject to change without prior notice.

Authorized Stockist

Our associates:

