

# Ball Valve (800#)

VA-111

## Design Features

- Regular/Reduced Bore Design with Compact and Sound 3 Pc Body Construction
- Investment Casting Components.
- Swing Away design for easy online repair
- Blow Out Proof Stem
- Available in Screwed / Socket Weld Ends
- Fire Safe Design as Standard
- Actuator Mounting Pad Available on Request

## Conformity to Standards and Codes:

**Design:** BS EN ISO 17292 / BS 5351

**Face to Face:** VTM Mfg. Standard

**Valve Testing:** API 598

**End Details:** Screwed Ends to Suit BS 21 BSP /

ASME B1.20.1(NPT)

Socket Weld Ends to

Suit ASME B 16.11

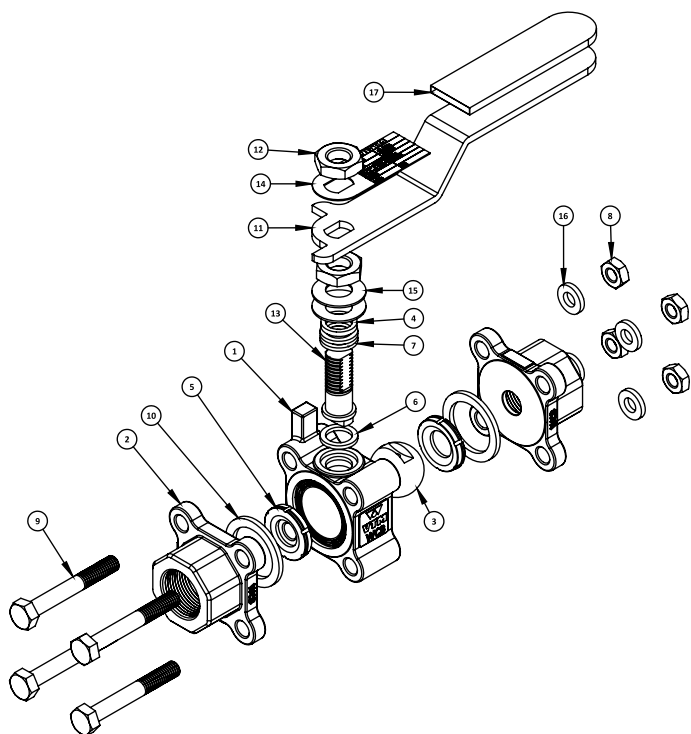
**Size Range:** 15MM (1/2") to  
50MM (2")



## Applications:

- Food & Pharmaceutical Industries.
- Compressed Air / Gas Installations.
- Oil Refineries.
- Chemical & Solvent Industries.
- Petrochemical Industries.
- Process Industries.





## PART LIST

S.No.	PART NAME	MATERIAL	MATERIAL	QTY.
1.	BODY	CARBONSTEEL/ STAINLESS STEEL	ASTM A216 GR.WCB/ASTM A105/ASTM A351 GR.CF8/CF8M	1
2.	CONNECTOR	CARBONSTEEL/ STAINLESS STEEL	ASTM A216 GR. WCB/ASTM A105/ASTM A351 GR.CF8/CF8M	1
3.	BALL	STAINLESS STEEL	ASTM A351 GR. CF8/CF8M / ASTM A276 GR. 304/316	2
4.	GLAND BUSH	STAINLESS STEEL	ASTM A276 GR. 410	1
5.	SEAT RING	PTFE/RPTFE	BS 6564 / CARBON/ GRAPHITE FILLED	2
6.	STEM SEAL	PTFE/RPTFE	BS 6564 / CARBON/ GRAPHITE FILLED	1
7.	GLAND PACKING	PTFE/RPTFE	BS 6564 / CARBON/ GRAPHITE FILLED	2
8.	NUT	CARBON STEEL	ISO 898-2 Gr. 8	4
9.	BOLT	CARBON STEEL	ISO 898-1 Gr. 8.8	2
10.	BODY SEAL	PTFE/RPTFE	BS 6564 / CARBON/ GRAPHITE FILLED	1
11.	HANDLEVER	CARBON STEEL	ASTM A105	1
12.	LOCK NUT	CARBON STEEL	ASTM A307 GR. B	1
13.	STEM	STAINLESS STEEL	ASTM A276 Gr. 304/316	1
14.	IDENTIFICATION PLATE	ALUMINIUM	-	1
15.	BELLEVILLE WASHER	SPRING STEEL	-	2
16.	WASHER	MILD STEEL	-	4
17.	SLEEVE	PVC	BS 6076	1

## DIMENSIONS

SIZE	A	B	C		D	E
			THREADED	SOCKET WELD		
15MM	66	9.7	1/2"-BSP	22.0	51	130
20MM	69	14.0	3/4"-BSP	27.4	51	130
25MM	90	20.5	1"-BSP	34.1	66	150
32MM	97	25.0	1-1/4"-BSP	42.9	77	150
40MM	103	32.0	1-1/2"-BSP	49.0	78	189
50MM	122	38.0	2"-BSP	61.5	83	189

Note: 1. All Dimensions are in MM unless & Otherwise Specified.  
2. NPT Threads & Socket Welds are available on Request.

## MAX. COLD WORKING PRESSURE :

69 Kg/Cm<sup>2</sup> PTFE Seat

103 Kg/Cm<sup>2</sup> RPTFE Seat

## TEST PRESSURE:

Hydraulic Body Test

154 Kg/Cm<sup>2</sup>

Pneumatic Seat Test

4-7 Kg/Cm<sup>2</sup>

## GUARANTEE

All valves are guaranteed against any manufacturing defects for a period of 12 months from date of supply, provided the valves have not been misused, damaged or installed for services they are not recommended. The company shall be liable to furnish part / parts thereof or full valve as the company may deem fit.

# V.A. VALVES

Regd. Office & Works: Udyog Nagar, Gadaipur, Jalandhar City -144 004  
Phone Office: +91-181-2601540, 2601541 Fax Office : +91-181-2601741  
E-mail : vavalves@vtm-utam.com

Website : [www.vtm-utam.com](http://www.vtm-utam.com), [www.vtm-valves.com](http://www.vtm-valves.com)

Due to continuous development program, design and data in this leaflet are subject to change without prior notice.

Authorized Stockist

Our associates:



PIONEERING FLUID CONTROLS