

Cast Stainless Steel Ball Valve

150# / 300#

VA-120S
VA-121S

Designs Features:

- Two Piece Body Construction.
- Blow Out Proof Stem.
- High Integrity Stem Sealing Design.
- Mirror Finished Solid Stainless Steel Ball.
- Pressure Relieving Slot Design of Seat Ring.
- Antistatic Valve Design ensures discharging of build-up of static Charge.
- Cavity Pressure Relief Mechanism.
- Actuator Mounting Gland Flange Suits to ISO 5211 standard.

Conformity to Standards and Codes:

Design: API 6D/BS EN ISO 17292

Face to Face: API 6D/ ASME B16.10

End Connection: Flanged Ends to Suit ASME B16.5 #150/#300

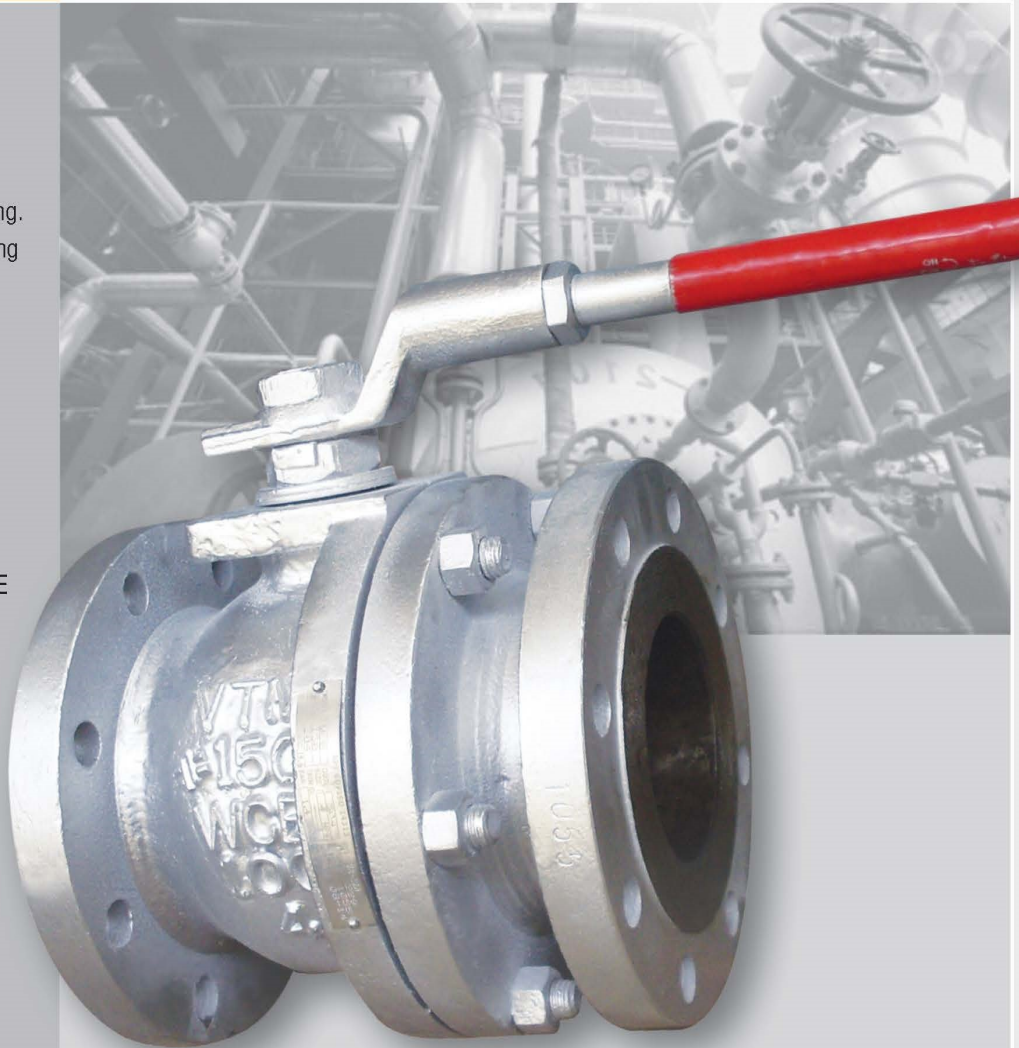
Butt-Weld Ends to Suit ASME B16.25

Range: 50mm (2") to 300mm (12")

Valve Testing: API 6D/ISO 5208

Applications:

- **Energy**-Power Generation, Oil and Gas, Refining etc
- **Processing**-Chemical Processing, Pulp and Water, Food and Beverages, Petro Chemicals etc
- **Other Industries**-Marine, Effluent Treatment, Mining, OEM etc



DOC. NO.: VAV-C-1028; REV. NO.:00; REV. DATE: 04-04-2016



PART LIST

S.NO.	PART NAME	MATERIAL	SPECIFICATION	QTY.
1.	BODY	CAST STAINLESS STEEL	ASTM A351 GR. CF8	1
2.	CONNECTOR	CAST STAINLESS STEEL	ASTM A351 GR. CF8	1
3.	BALL	STAINLESS STEEL	ASTM A351 GR. CF8/CF8M / ASTM A276 GR. 304/316	1
4.	STEM	STAINLESS STEEL	ASTM A276 GR. 304/316/410	1
5.	GLAND	STAINLESS STEEL	ASTM A276 GR. 304	1
6.	LEVER HOLDER	CAST CARBON STEEL	ASTM A216 GR.WCB	1
7.	SEAT RING	PTFE	BS 6564	2
8.	GLAND PACKING	PTFE	BS 6564	3
9.	GASKET	PTFE	BS 6564	1
10.	LOCKING WASHER	MILD STEEL	EN 8	1
11.	STEM SEAL	PTFE	BS 6564	1
12.	LEVER PIPE	FORGE STEEL	ASTM A105	1
13.	BELLEVILLE WASHER	STEEL	50CRV4	2
14.	BODY/CONNECTOR STUD	CARBON STEEL	ASTM A193 GR.B7	-
15.	BODY/CONNECTOR NUT	CARBON STEEL	ASTM A194 GR.2H	-
16.	HANDLE NUT	CARBON STEEL	ASTM A194 GR.2H	1
17.	SPRING (ANTI STATIC DEVICE)	STAINLESS STEEL	AISI304	2
18.	BALL (ANTI STATIC DEVICE)	STAINLESS STEEL	AISI304	2

Note : Contact Factory for other Technical Details / Material in Special Grades

TEST PRESSURE

RATING	HYDROULLIC		PNEUMATIC (OPTIONAL)
	BODY (Kg/cm ²)	SEAT (Kg/cm ²)	SEAT (Kg/cm ²)
#150	29	21.5	4-7
#300	76	56	4-7

DIMENSIONS #150

SIZE	A	A1	B	C	D	E	F	G	H	I	J	K
50MM	178	216	50	150	92.1	110	225	14.3	2	120.7	19.05	4
65MM	191	241	63	180	104.8	140	290	15.9	2	139.7	19.05	4
80MM	203	283	76	190	127.0	182	320	17.5	2	152.2	19.05	4
100MM	229	305	100	230	157.2	201	362	22.3	2	190.5	19.05	8
125MM	254	338	125	255	185.7	222	400	22.3	2	215.9	22.22	8
150MM	394	457	150	280	215.9	242	450	23.9	2	241.3	22.22	8
200MM	457	521	200	345	269.9	254	510	27.0	2	298.5	22.22	8
250MM	533	559	250	405	323.8	275	650	28.6	2	362.0	25.4	12
300MM	610	635	300	485	381.0	295	650	30.2	2	431.8	25.4	12

Note : All dimensions are in mm unless and otherwise specified.

GUARANTEE

All valves are guaranteed against any manufacturing defects for a period of 12 months from date of supply, provided the valves have not been misused, damaged or installed for services they are not recommended. The company shall be liable to furnish part/ parts thereof or full valve as the company may deem fit.

V.A. VALVES

ISO 9001-2008 Certified

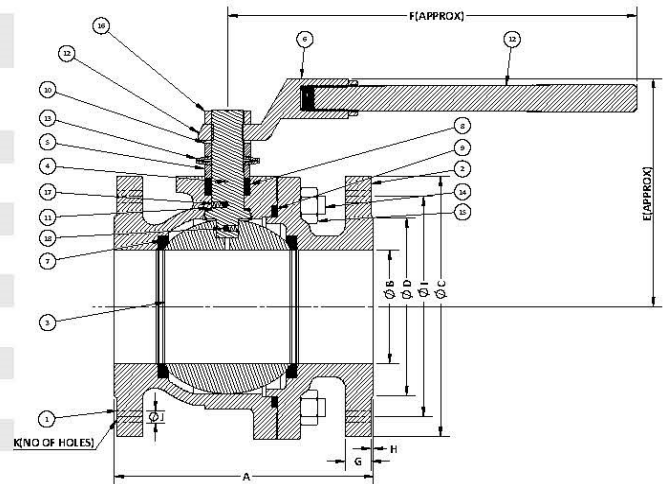
Regd. Office & Works: Udyog Nagar, Gadaipur, Jalandhar City -144 004

Phone: +91-181-2601540, 2601541 Fax: +91-181-2601741

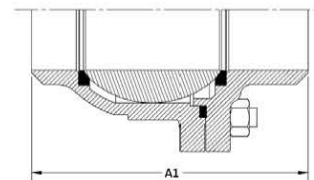
E-mail : vavalves@vtm-utam.com

Website : www.vtm-utam.com/www.vtm-valves.com

Due to continuous development program, design and data in this leaflet are subject to change without prior notice.



FLANGE ENDS



BUTT WELD ENDS

DIMENSIONS #300

SIZE	A	A1	B	C	D	E	F	G	H	I	J	K
50MM	216	216	50	165	92.1	120	225	20.7	2	127.0	19.05	8
65MM	241	241	63	190	104.8	155	290	23.9	2	149.2	22.22	8
80MM	283	283	76	210	127.0	200	320	27.0	2	168.3	22.22	8
100MM	305	305	100	255	157.2	220	362	30.2	2	200.0	22.22	8
125MM	381	381	125	280	185.7	235	400	33.4	2	235.0	22.22	8
150MM	403	457	150	320	215.9	253	450	35.0	2	269.9	22.22	12
200MM	502	521	200	380	269.9	275	510	39.7	2	330.2	25.40	12
250MM	568	559	250	445	323.8	300	650	46.1	2	387.4	28.57	16
300MM	648	635	300	520	381.0	315	650	49.3	2	450.8	31.75	16

Authorized Stockist

Our associates:



PIONEERING FLUID CONTROLS