

Wafer & Lugged End Butterfly Valves

VA-13
VA-14



Design Features:

- Top Flange Drilled to fit ISO 5211 dimensions.
- Heavy Duty One Piece wafer & Lugged Body Design.
- Extended Neck Serves for 50mm (2") piping insulation from line media.
- Blow Out Proof Stem Sealing.
- Both Single & Double Piece Stem Design with heavy duty square grooved Disc/Stem Connections.
- Moulded O-Ring seals to serve as flange gaskets.
- Low Pressure Loss.

Conformity to Standard & Codes:

Design Standard:

BS 5155, API 609, IS 13095

Face to Face Dimension:

BS 5155, API 609, IS 13095

End Detail:

Drilled/Tapped to suits to insertion b/w
ASME B 16.5 #150 / BS 4504
PN10/PN16 Flanges

Range: 50mm to 300mm

Valve Testing:

API 598

Applications

- HVAC
- Sugar
- Chemical and petro chemical
- Pulp and paper industries
- Food processing
- Water work systems
- Sewage plants
- Irrigation Systems
- Pharmaceutical



DOC. NO.: VAV-C-1034; REV. NO.:00; REV. DATE: 04-04-2016



ISI MARKED
CM/L No:-9503172

PART LIST

S. No.	PART NAME	MATERIAL	SPECIFICATION
1	BODY	CAST IRON	BS 1452 GR. 220 / IS 210 GR. 220
2	DISC	DUCTILE IRON/ STAINLESS STEEL	ASTM A536 GR. 65-45-12 / ASTM A351 GR. CF8/CF8M
3	SEAT	RUBBER/PLASTIC	NBR/EPDM/PTFE/VITON
4	MAIN SHAFT	STAINLESS STEEL	ASTM A 276 GR. 410
5	PIVOT SHAFT	STAINLESS STEEL	ASTM A 276 GR. 410
6	SHAFT BUSH	PLASTIC	LDPE/NYLON/PTFE
7	PLUG O-RING	RUBBER	NBR/EPDM
8	PLUG	CAST IRON	BS 1452 GR. 220 / IS 210 GR. 220
9	FASTNERS	STAINLESS STEEL	SS 201

Note: Contact Factory for other Technical Detail/Other Grade Material.

DIMENSIONS

SIZE	INCH	A	B	C	D	E	F	G	H	I	J
DN50	2"	43	50	77	132	65	50	9.5	10	7.5	4
DN65	2 1/2"	46	66	84	140	65	50	9.5	10	7.5	4
DN80	3"	46	80	96	147	65	50	9.5	10	7.5	4
DN100	4"	52	101	112	172	65	70	11	12	9.5	4
DN125	5"	56	124	121	187	65	70	11	12	9.5	4
DN150	6"	56	150	134	201	90	70	11	12	9.5	4
DN200	8"	60	201	168	229	90	102	17	19	11.5	4
DN250	10"	68	251	202	269	90	102	20	21	11.5	4
DN300	12"	78	301	234	298	125	102	20	21	11.5	4

*All Dimensions are in MM unless and Otherwise Specified.

HAND LEVER

SIZE	L	H1	H2
50/65/80MM	240.00	25.00	31.00
100/125/150MM	290.00	25.00	31.00
200MM	340.00	28.00	33.00
250/300MM	550.00	32.00	35.00

GEAR BOX SIZES

SIZE	RATIO	TURN TO CLOSE 90°	MAX. OUTPUT TORQUE (NM)	A	B	C	D	E
32 TO 150mm (1 1/4" - 6")	25:1	6.25	125	145	200	60	50 or 70	4
200 TO 300mm (8" - 12")	32:1	8.00	500	240	300	75	102	4

NOTE: VTM designed electrical actuators are available on demand.
VTM designed pneumatic actuators are available on demand.

GUARANTEE

All valves are guaranteed against any manufacturing defects for a period of 12 months from date of supply, provided the valves have not been misused, damaged or installed for services they are not recommended. The company shall be liable to furnish part/ parts thereof or full valve as the company may deem fit.

V.A. VALVES

ISO 9001-2008 Certified

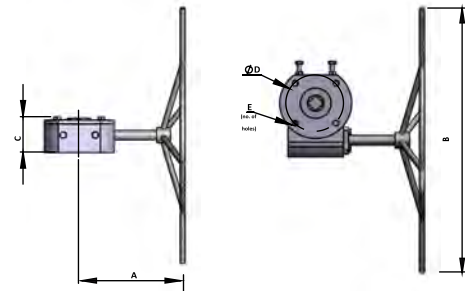
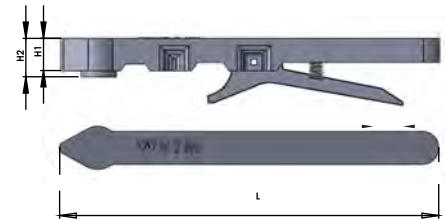
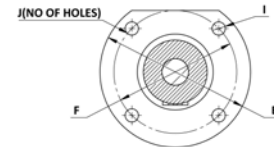
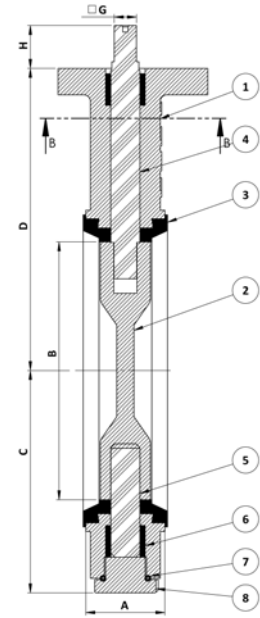
Regd. Office & Works: Udyog Nagar, Gadaipur, Jalandhar City -144 004

Phone: +91-181-2601540, 2601541 Fax: +91-181-2601741

E-mail : marketing@vk-utam.com, info@vtm-valves.com

Website : www.vk-utam.com, www.vtm-valves.com

Due to continuous development program, design and data in this leaflet are subject to change without prior notice.



TEST PRESSURE

RATING	SHELL (Kg/cm ²)	SEAT (Kg/cm ²)
PN-16	24.0	17.6

Authorized Stockist

Our associates:



PIONEERING FLUID CONTROLS